

Application:

LED surface mounted ligature and vandal resistant light for walls. This light has tamper resistant fasteners and concealed continuous hinges. **Standard Specifications:**

Housing & Door Construction: Precision die formed 16 gauge Cold Rolled Steel, end plates are continuously welded, door corners are seam welded. Tamper resistant TORX head fasteners with center pin.

Mounting System: Surface mounted with bolts (supplied by others)

Lens System: 0.250" clear polycarbonate outer lens for impact resistance, .125" prismatic acrylic lens for light diffusion (thicknesses available on request)

Electrical Details: LED's coupled with high efficiency drivers prated to deliver an L80 performance >50,000 hours. The standard driver has a THD of <20%. Standard low-voltage dimming (0-10v,1%). Finish: Powder coat painted white

Size, Lamp Output, Color Temperature & Option Combinations:

Nominal Size	Lamp Output (Lumens)	Color Temperature	Options
1' x 2'	3900, 5200	3500K, 4000K, 5000K	A, B, F, N, R
1' x 4'	5200, 7800, 10400	3500K, 4000K, 5000K	A, B, F, N, R

Specifying / Ordering: (Please note that the above combinations are available only)

Example: 818L46-12-039-30-A x 5 units

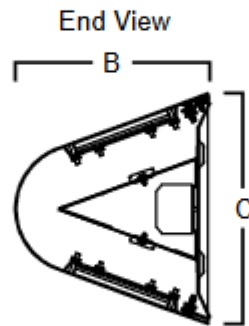
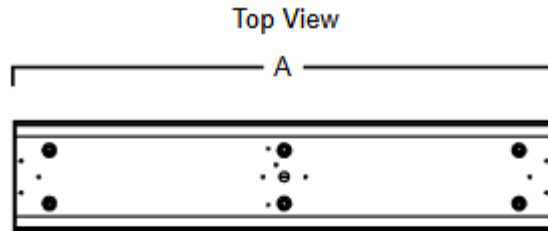
	Nominal Size	Lamp Output	Color Temperature	Options	Quantity
818L46 -	_____ -	_____ -	_____ -	_____ -	X _____ units
	12 – 1' x 2'	039 – 3900 Lumens	35 – 3500K	0 – No Options	
	14 – 1' x 4'	052 – 5200 Lumens	40 – 4000K	A – Adressable Digital Dimming (DALI)	
		078 – 7800 Lumens	50 – 5000K	B – Emergency Battery Pack	
		104 – 10400 Lumens		F – Fuseholder, In-line Single Pole	
				N – Night Light (White LED)	
				R – Radio Frequency Filter	

Order Confirmation:

Facility Name: _____	Authorizer's Name: _____
Date: _____	Authorizer's Signature: _____

818L46 SR Wall Surface Bullnose Light

Dimensional Drawings:



	A	B	C
1x2	25.5"	9"	10.5"
1x4	50.5"	9"	10.5"